

---

# Feeding Wisconsin 2016 Hunger & Health Summit

The Ascension Perspective

Marcy Buren, Director, Community Health

May 4, 2016

---

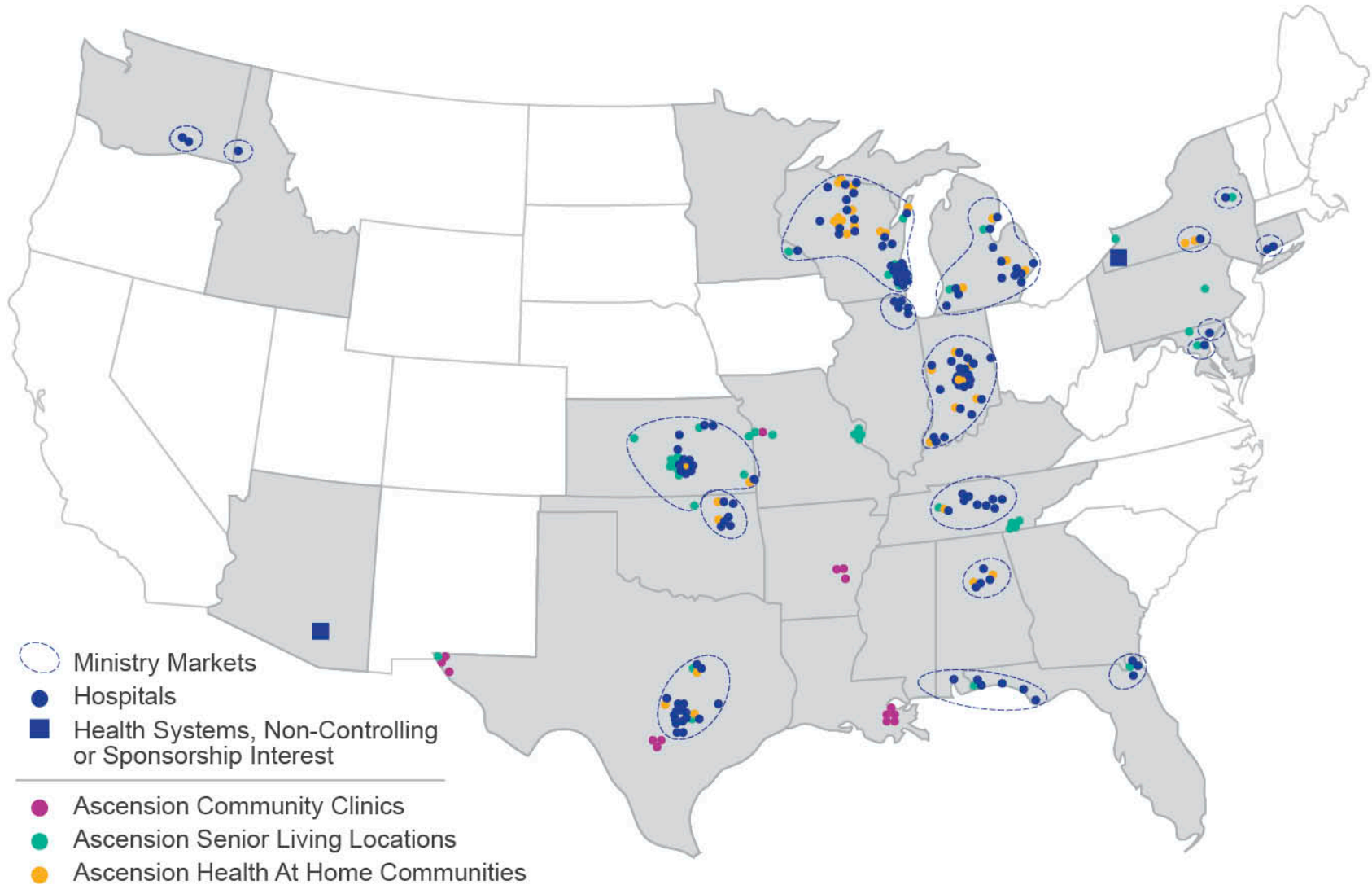
One Mission. One Integrated Ministry. One Ascension.



## ASCENSION MISSION

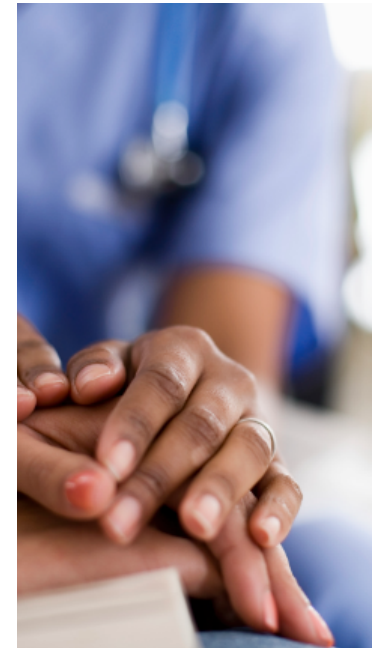
Rooted in the loving ministry of Jesus as healer, we commit ourselves to serving all persons with *special attention to those who are poor and vulnerable*. **Our Catholic health ministry is dedicated to spiritually centered, holistic care which *sustains and improves the health of individuals and communities***. We are advocates for a compassionate and just society through our actions and our words.

# ASCENSION'S CARE DELIVERY MAP



## FACILITIES AND STAFF *(as of June 30, 2015)*

Locations	1,900
General Acute Care Hospitals	103
Rehabilitation Hospitals	4
Behavioral Health Hospitals	8
Long-Term Acute Care Hospitals	2
Joint Venture Hospitals ( <i>&lt;50% ownership</i> )	12
Available Beds	21,556
Associates	149,000



# CONTINUUM OF CARE SITES

## HOSPITALS BY TYPE

General Acute Care	110
Rehabilitation Hospitals	4
Behavioral Health Hospitals	8
Long-Term Acute Care Hospitals	2
Hospitals Not Majority Owned – Joint Venture or Management Agreement	13

## SENIOR CARE AND LIVING FACILITIES

### BEDS

Long Term Care/Skilled Nursing	33	3,792
Independent and Assisted Living	23	2,011
Other Senior Living (HUD, other)	8	
PACE Programs/Participants	3	500

## POST ACUTE SERVICE SITES (2013)

Durable Medical Equipment	16
Home Health Services	25
Hospice Services	27
Outpatient Rehabilitation Centers	188

## AMBULATORY CARE AND DIAGNOSTICS (2013)

Ambulatory Surgery Centers	69
<i>Surgery Center Operating Rooms</i>	267
Occupational Health Programs	49
On-Site Employer Clinics	16
Free-standing Imaging Sites	191
Retail Lab Collection Sites	265
Primary Care Clinics	300
Retail Pharmacy Sites	176
Sleep Centers	16
Virtual Care Programs	64

## EMERGENCY SERVICES (2013)

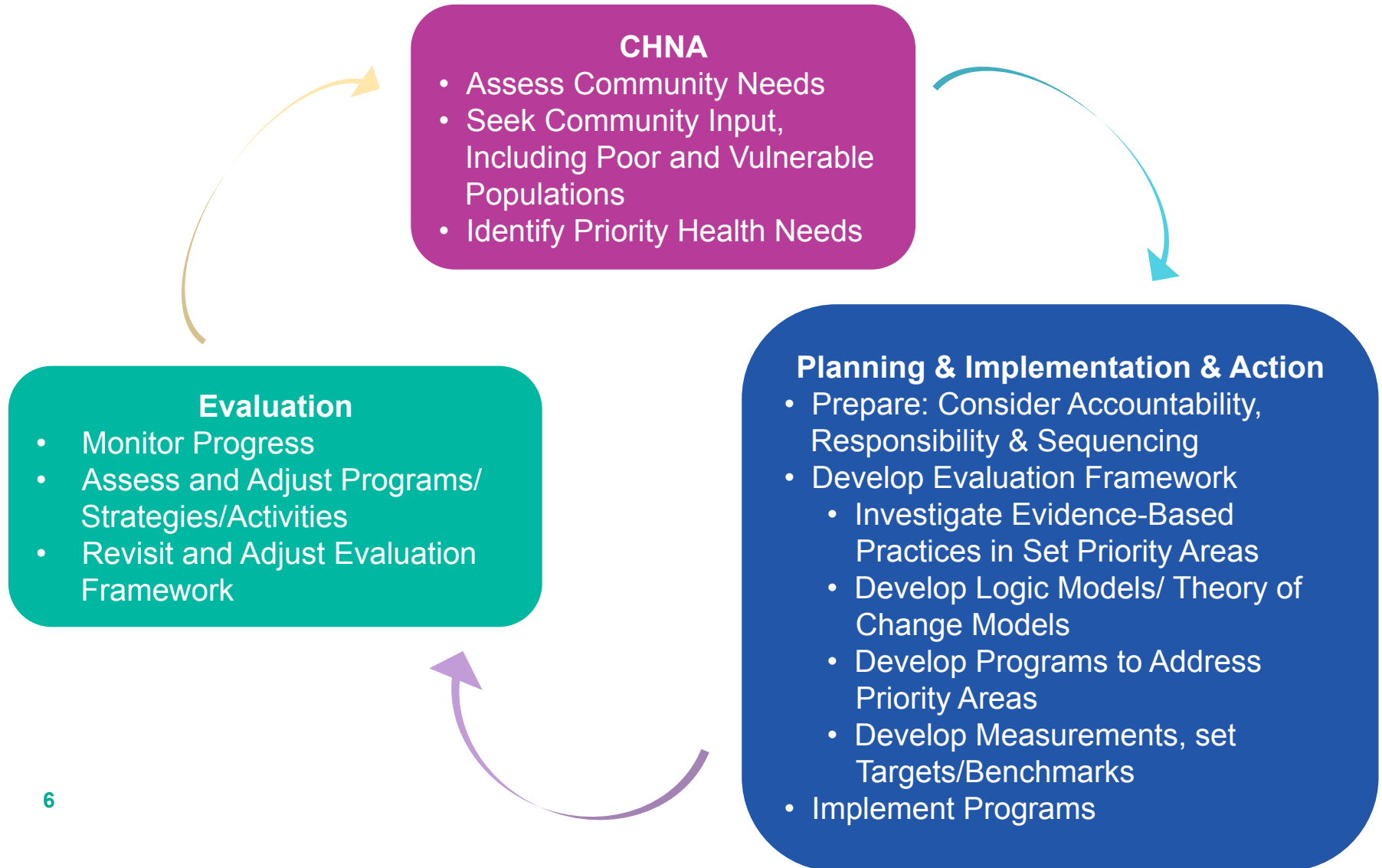
Free-standing ER and Urgent Care Sites	45
Emergency Medical Services (EMS)	28

## COMMUNITY SERVICES (2013)

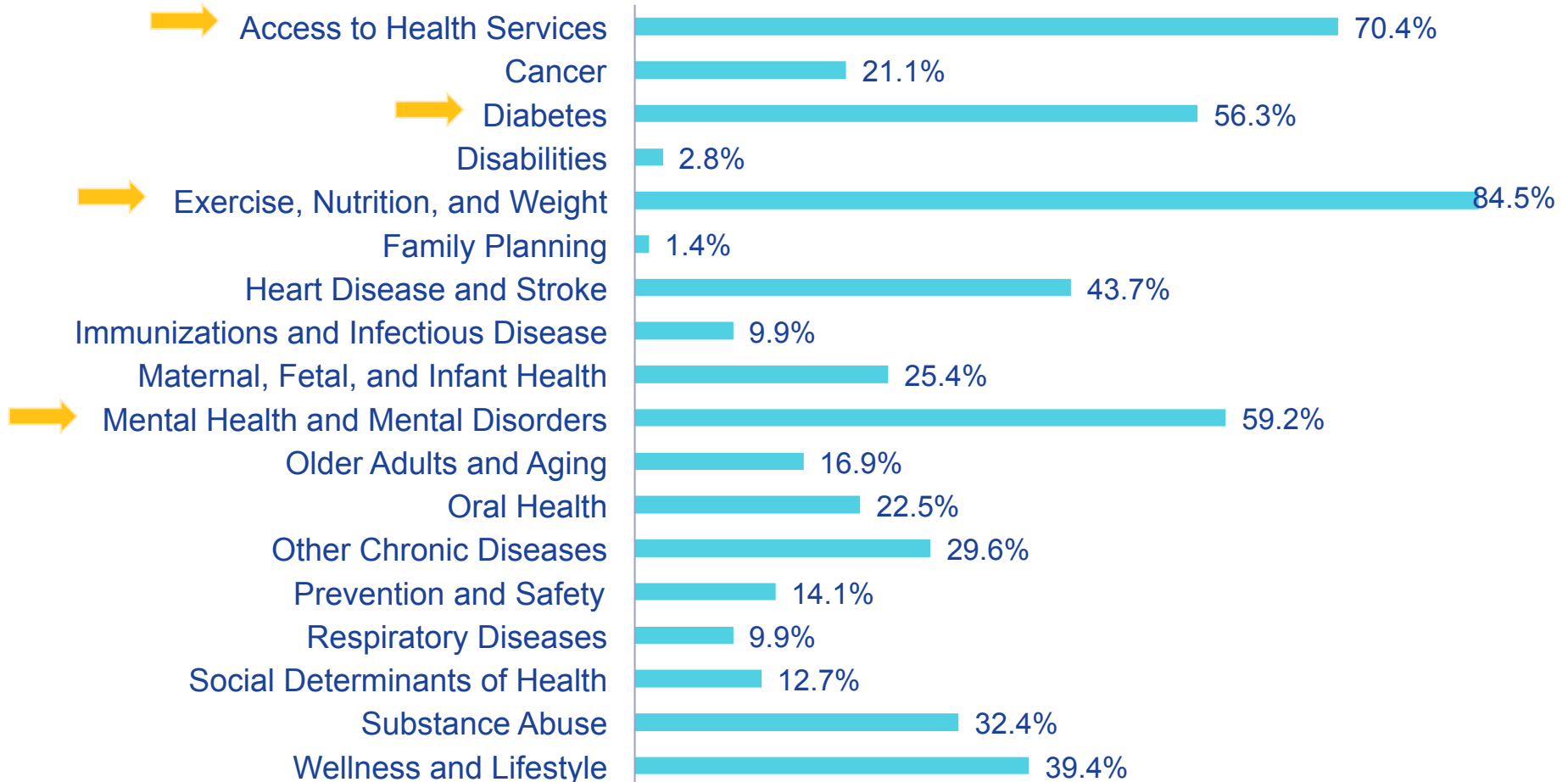
Mobile Clinical Services	20
Wellness Centers	18
Community/Social Programs	157



# A CYCLICAL PROCESS



# PRIORITY AREAS IDENTIFIED IN CHNA (2013)




# CHNA ON THE HOSPITAL WEBSITE

[Ascension Health Portal](#) | [Genesys Email](#) | [eHealth](#)

GENESYS

- [Genesys Home](#)
- [Our Services](#)
- [Find a physician](#)
- [Education](#)
- [Patient Information](#)
- [Visitor Information](#)
- [Support Genesys](#)
- [Volunteering](#)
- [Calendar](#)
- [News](#)
- [About Us](#)
- [Contact Us](#)
- [Careers](#)




Welcome to the Genesys Health System (GHS) web site. GHS, a member of Ascension Health, is a group of affiliated medical campuses, outpatient centers, primary care locations and ancillary health care organizations with a mission and history of improving our community's health for more than 90 years. As the leading health care provider in mid-Michigan, Genesys is anchored by a 21st century inpatient facility - Genesys Regional Medical Center at Health Park in Grand Blanc, Michigan - one of the first medical centers of its kind built both clinically and architecturally around a patient-focused care philosophy. [\[More\]](#)

**News Releases:**

- [04/05/2016](#) - Genesys presents healthy eating through DASH
- [03/29/2016](#) - Ascension Michigan care sites now provide Veterans Choice
- [03/10/2016](#) - Ascension Mid-Michigan President Betsy Aderholdt to retire
- [02/17/2016](#) - Reverence Home Health & Hospice receives award of excellence
- [02/05/2016](#) - Genesys presents seminar on cardiac rehabilitation
- [02/04/2016](#) - Genesys Athletic Club offers weight loss program

**Quick Links**

- [Advance Care Planning](#)
- [Community Health Needs Assessment](#)
- [Genesys CHNA Implementation Plan](#)
- [Financial Assistance](#)
- [Genesys Babies](#)
- [Hospital Bill Inquiries](#)



**DIRECT ADMITS**

8



# CHNA ON THE HOSPITAL WEBSITE



ST. MARY'S OF MICHIGAN - SAGINAW | ST. MARY'S OF MICHIGAN - STANDISH | ST. JOSEPH HEALTH SYSTEM - TAWAS

Home | Contact | Careers | Associates | Physicians

Medical Services | Maps & Locations | Patients & Visitors | Community Health & Wellness | Giving & Giving Back

## BE STROKE SMART

MINUTES MATTER. ACT FAST.

Free Stroke Screening - May 18, 2016

Call (844) 907-8000 to reserve your spot.

News & Updates

- Friday, April 23, 2016  
**100,000th Cardiac Cath**  
St. Mary's of Michigan is the first in the area to reach this milestone.
- Friday, April 15, 2016  
**Dr. Ernie P. Balcuova Joins St. Mary's of Michigan Cancer Care Team**  
Effective April 18, Dr. Balcuova's new office will be located on the 2nd floor at St. Mary's of Michigan Towne Center, 4599 Towne Centre Road, in Saginaw Township.
- Friday, April 8, 2016  
**St. Mary's Hospital Now Official Provider of Veterans Care**  
Veterans Can Now Receive Care from Ascension Michigan Doctors through the Veterans Choice Program.

(click here for entire news archive)



ST. MARY'S OF MICHIGAN - SAGINAW | ST. MARY'S OF MICHIGAN - STANDISH | ST. JOSEPH HEALTH SYSTEM - TAWAS

Home | Contact | Careers | Associates | Physicians

Medical Services | Maps & Locations | Patients & Visitors | Community Health & Wellness | Giving & Giving Back

Community Health & Wellness

At St. Mary's of Michigan, we believe there are numerous ways in which we can promote and support health and wellness in our community. Prevention and education are two key components to good health and well-being. Here are just a couple of the educational opportunities we're pleased to offer.

View our Health Connections newsletter  
You can enjoy current and past editions of our newsletter offered three times a year.

Sign up for our Health E-Connections electronic newsletter  
Get health information you want and need, sent directly to your email!

Browse our Health & Wellness Library  
Fast, easy, online access to important articles on a wide range of health topics.

Community Health/Wellness

- Believe in Better
- Community Health Report
- Footsteps for Fitness
- Support Groups
- Community Education
- Newsletters
- Bee Healthy Run Walk
- Breast Cancer Awareness

800 South Washington Avenue | Saginaw, MI 48601 | (989) 907-8000 | 1-844-907-8000

© 2014 Ascension St. Mary's of Michigan



ST. MARY'S OF MICHIGAN - SAGINAW | ST. MARY'S OF MICHIGAN - STANDISH | ST. JOSEPH HEALTH SYSTEM - TAWAS

Home | Contact | Careers | Associates | Physicians

Medical Services | Maps & Locations | Patients & Visitors | Community Health & Wellness | Giving & Giving Back

Community Health/Wellness

- Believe in Better
- Community Health Report
- Footsteps for Fitness
- Support Groups
- Community Education
- Newsletters
- Bee Healthy Run Walk
- Breast Cancer Awareness

Community Health Report

St. Mary's of Michigan - Saginaw

Our Mission, Vision and Values provide a strong foundation and guidance for the work St. Mary's of Michigan does in meeting the needs of the Community, with a special attention to the poor and vulnerable. As such, we are proud to share with you the results of the

**2014-2016 Saginaw County Roadmap to Health**

**2011-2014 Community Health Needs Assessment (CHNA) and Action Plan.**

This work began in 2009 as part of the Saginaw County Community Health Improvement Planning Team, a key collaborative group representing the interests of over 63 agencies and community leader stakeholders from both public and private sectors. The community health report was developed by collecting and analyzing data from people and organizations from throughout Saginaw County. Led by public health experts from our local community, it included using data sources from federal, state, county and local reports, diverse consumer focus groups and community surveys.

The findings from the community health report presented in 2011 highlight the top five areas of concern prioritized by the community:

- Access to Health Care
- Infant Mortality
- Chronic Disease
- Obesity
- Behavioral Health

St. Mary's of Michigan has a rich history of helping those who are poor and most vulnerable, empowering with resources to assist in self-sufficiency. We are supporting these community health efforts by investing human capital and expertise collaborating in work groups, and through providing a community outreach center with Registered Nurses and Community Health Workers to help connect those in need to available resources including:

- Center of HDPE and a network of free clinics as conduits to care to a medical home
- Pharmacy Assistance Program and Charitable Community Benefit Pharmacy
- Community Health Education and Outreach Programs for Chronic Diseases

# WHAT IS COMMUNITY BENEFIT?

---

**COMMUNITY BENEFIT: A demonstrable commitment to community service, provided in response to identified community needs, including:**

Free and discounted care to those unable to afford healthcare

---

Care to low-income beneficiaries of Medicaid and other indigent care programs

---

Services designed to improve community health and increase access to healthcare

---

Community benefit is also the basis of the tax-exemption of not-for-profit hospitals

---

## WHAT IS COMMUNITY BENEFIT?

### Community benefit must do at least one of the following:

- Improve access to healthcare services
- Enhance the health of the community
- Advance medical or health knowledge
- Relieve or reduce the burden of government or other community efforts

### Community benefit programs are NOT:

- Provided for marketing purposes
- Restricted to hospital employees and physicians
- Programs or services that are required of all healthcare providers by rules or standards
- Unrelated to health or the Mission of the organization

# BEFORE YOU MEET...

- Understand the needs in your community
  - Review the hospital's CHNA and any other community data you have
- Identify what assets and resources you can provide
  - This includes things such as expertise, programs, data, access to particular populations, relationships, etc.
- Determine your best point of contact
  - Community Health Director or Community Benefit Director is a good place to start
  - Other contacts could include people in Strategy, Finance or Mission (for faith-based hospitals)



---

## PARTNERING WITH HOSPITALS & HEALTHCARE PROVIDERS

- Provide input on community health needs and prioritization and available assets/resources
- Identify how you can help achieve goals outlined in the Implementation Strategy
- Build relationships to partner on projects that are mutually beneficial
- Understand that community benefit funds are limited; think creatively about use of resources (financial and other)

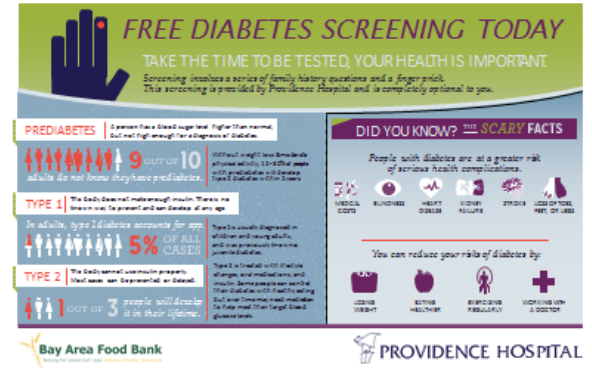
# ASCENSION'S FOOD BANK PARTNERSHIPS



*Diabetes screening at food giveaway*



*Co-sponsor events*



*Co-branded educational materials*



*Diabetes-friendly food box*



*Cooking demonstrations*



*Community gardens*

# ASCENSION'S FOOD BANK PARTNERSHIPS

## Sponsors:



Bayou La Batre



Rural Health Clinic  
Design: Ascension Bayou La Batre, Inc.

- ✓ Food boxes
- ✓ Screenings
- ✓ Resources
- ✓ Prescription assistance
- ✓ Insurance enrollment
- ✓ Eye exams
- ✓ Glasses vouchers
- ✓ Education

- ❖ Approximately 300 attendees
- ❖ 64 volunteers
- ❖ 27 community organizations



---

## FOR MORE INFORMATION:

**Marcy Buren, LMSW**

Director, Community Health

[marcy.buren@ascension.org](mailto:marcy.buren@ascension.org)

(810) 813-4544

[www.ascension.org](http://www.ascension.org)